

VISION PRO™

MHE fleet management software to help your operation run smarter, safer, and more efficiently.

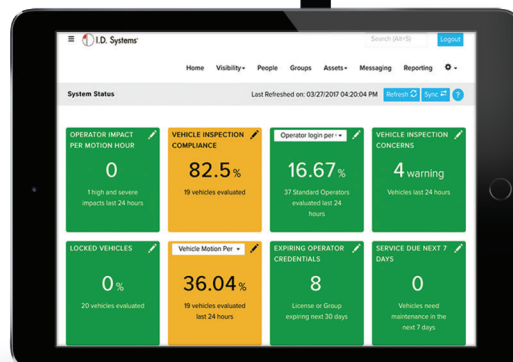
Vision Pro™ fleet management software provides managers of MHE equipment with advanced capabilities to improve safety, reduce damage and maintenance costs, and increase efficiency in material handling operations. Vision Pro is the user software of the PowerFleet® Vehicle Management System, offering powerful reporting tools and visibility of your equipment, and delivering critical operational information to your desktop or mobile device to help you manage and control your fleet with ease.

Analyze Your Operations to Find Areas for Improvement

Vision Pro gives you robust tools to analyze your fleet's health and performance, and to keep your operations running smoothly.

- Quickly focus in on the information you need with Vision Pro's pre-defined and user customizable reports, with live filtering capabilities so you can find what you need fast.
- Run reports manually or schedule emailed reports for categories like impacts, checklist compliance, maintenance, vehicle status, and driver performance.
- Vision Pro's customizable System Status dashboard provides instant feedback on common operational metrics to highlight and compare performance to expectations.
- Easily stay connected via Vision Pro's home page with current fleet statistics and system events such as recent high impacts, expired operator credentials, locked out vehicles, and maintenance issues.

Vision Pro® System Status Dashboard, Tablet View



Top: Vision Pro® Impacts Report View, Severe and Medium Impact Summary by Vehicle

Manage Your Operations with Ease

- Adding a new driver? Updating training credentials? Replacing a vehicle? Vision Pro makes it faster and easier to manage your fleet and operators.
- Leverage Vision Pro's global search feature to find the information you need in just a couple of clicks.
- Find assets and operators faster, and make edits easier, with Vision Pro's advanced filters and multi-edit capabilities.
- Continue working where you left off using Vision Pro's list of recently viewed items.

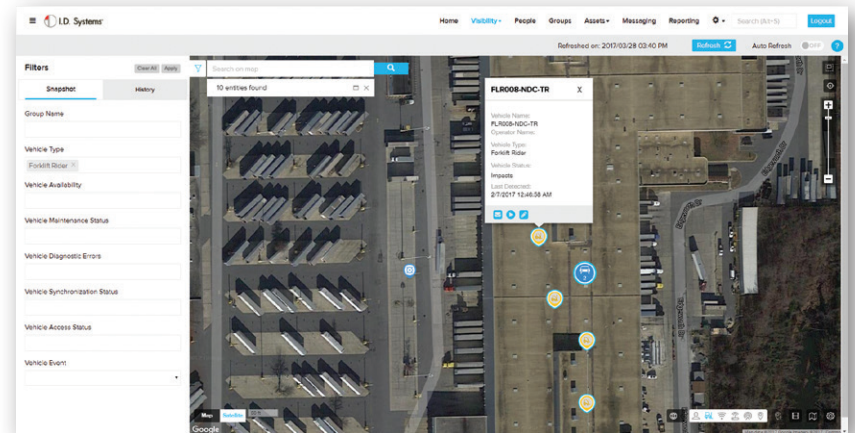
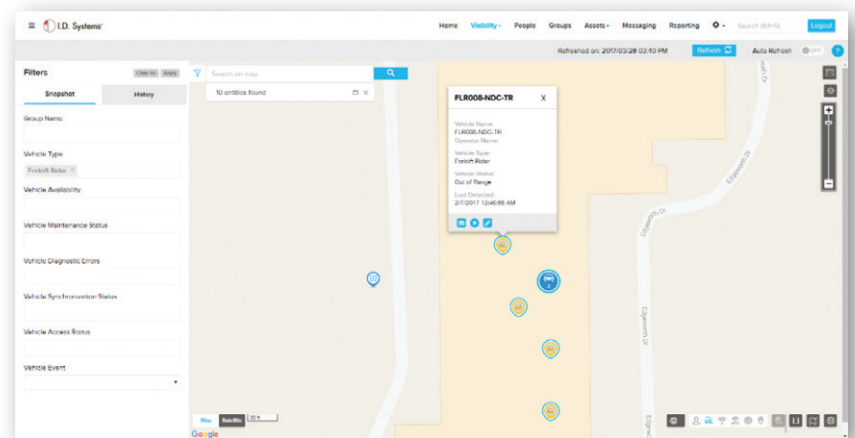
Gain Visibility with Maps

Vision Pro's Map feature lets you see where your assets are in your facility at any time and from anywhere. With multiple views including facility floor plan, map, and satellite view, you can locate your equipment without searching the floor, enabling your maintenance team to perform PM's and critical repairs sooner, improving uptime and making more equipment available to drivers.

Easier to Implement and Integrate with 3rd Party Software

Vision Pro is available as a fully hosted, cloud-based Software as a Service (SaaS) platform offering a lower total cost of ownership, or as a locally installed system.

Vision Pro also provides tight integration with other enterprise software systems including WMS, LMS, and ERP systems, allowing your VMS data to be utilized in other critical software environments for a complete view of your operations.



Vision Pro® map and satellite views, filtered by vehicle type